

A photograph of a teacher and two young students in a classroom. The teacher, a woman with glasses, is leaning over a desk, smiling and talking to the students. One student is looking at a book, and the other is looking towards the teacher. The background shows bookshelves filled with books and colorful educational posters on the wall.

# Decision 7: School Day/Calendar Redesign TCLAS Initiative Kickoff Webinar

# Welcome and Congratulations on your Award!



**Brian Doran**  
Director of Expanded Learning Models

---



**Shaelyn Macedonio**  
Summer Learning Project Manager

---







# Onboarding Webinar Schedule

9/6	9/7	9/8	9/9	9/10
[Labor Day]	<i>Award notification &amp; confirmation survey sent</i>		9am-10am: TCLAS Launch Web.4 m0 -61.347 ISQq 1 0 0 1 74 ref#347 ISQq 1 0 0 1 74 m0 0 m0 -61.347 ISId7	
9/13	9/14	9/15	9/16	9/17
9am-10am: TCLAS Launch	4pm-5pm: Decision 10	<ul style="list-style-type: none"> <li>9am-10am: Decision 1</li> <li>10:30am-11:30am: Decision 3B</li> <li>2:30pm-3:30pm: Print Access (Decisions 2B &amp; 3C)</li> <li>4-5pm: Digital Access (Decisions 2A, 3A, 3D, &amp; 6)</li> </ul>	<ul style="list-style-type: none"> <li>9am-10am: Decision 9A</li> <li>10:30am-11:30am: Decision 9B</li> <li>1pm-2pm: Decision 9C</li> <li>2:30pm – 3:30pm: Decision 2A &amp; 2C (CRIMSI)</li> <li>4pm-5pm: Decision 2A &amp; 2C (SAVL)</li> </ul>	9am-10am: eGrants
9/20	9/21	9/22	9/23	9/24
9am-10am: Decision 3E	<ul style="list-style-type: none"> <li>9am-10am: Decision 8</li> <li>1pm-2pm: Decision 5</li> <li>2:30pm-3:30pm: Decision 4</li> <li>4pm-5pm: Decision 7</li> </ul>			9am-10am: eGrants office hours
				10/1, 10/15, and 10/29
				9am-10am: eGrants office hours



# Onboarding Webinar Schedule



9/6	9/7	9/8	9/9	9/10
Labor Day	Award notification & confirmation survey sent		9am-10am: TCLAS Award Kick-Off Webinar	Confirmation survey due 9/7/21
9/13	9/14	9/15	9/16	9/17
9am-10am: TCLAS Award Kick-Off Webinar	4pm-5pm: Decision 10	<ul style="list-style-type: none"> <li>9am-10am: Decision 1</li> <li>10:30am-11:30am: Decision 3B</li> <li>2:30pm-3:30pm: Print Access (Decisions 2B &amp; 3C)</li> <li>4-5pm: Digital Access (Decisions 2A, 3A, 3D, &amp; 6)</li> </ul>	<ul style="list-style-type: none"> <li>9am-10am: Decision 9A</li> <li>10:30am-11:30am: Decision 9B</li> <li>1pm-2pm: Decision 9C</li> <li>2:30pm – 3:30pm: Decision 2A &amp; 2C (CRIMSI)</li> <li>4pm-5pm: Decision 2A &amp; 2C (SAVL)</li> </ul>	9am-10am: eGrants
9/20	9/21	9/22	9/23	9/24
9am-10am: Decision 3E	<ul style="list-style-type: none"> <li>9am-10am: Decision 8</li> <li>1pm-2pm: Decision 5</li> <li>2:30pm-3:30pm: Decision 4</li> <li>4pm-5pm: Decision 7</li> </ul>			9am-10am: eGrants office hours
				10/1, 10/15, and 10/29
				9am-10am: eGrants office hours



# Optional eGrants Application Webinars

Webinar	Date/Time	Short Registration Link
Overview Webinar		<i>Recording &amp; slides available soon on <a href="http://tea.texas.gov/tclas">tea.texas.gov/tclas</a></i>
Office Hours #1	Friday, 9/24	



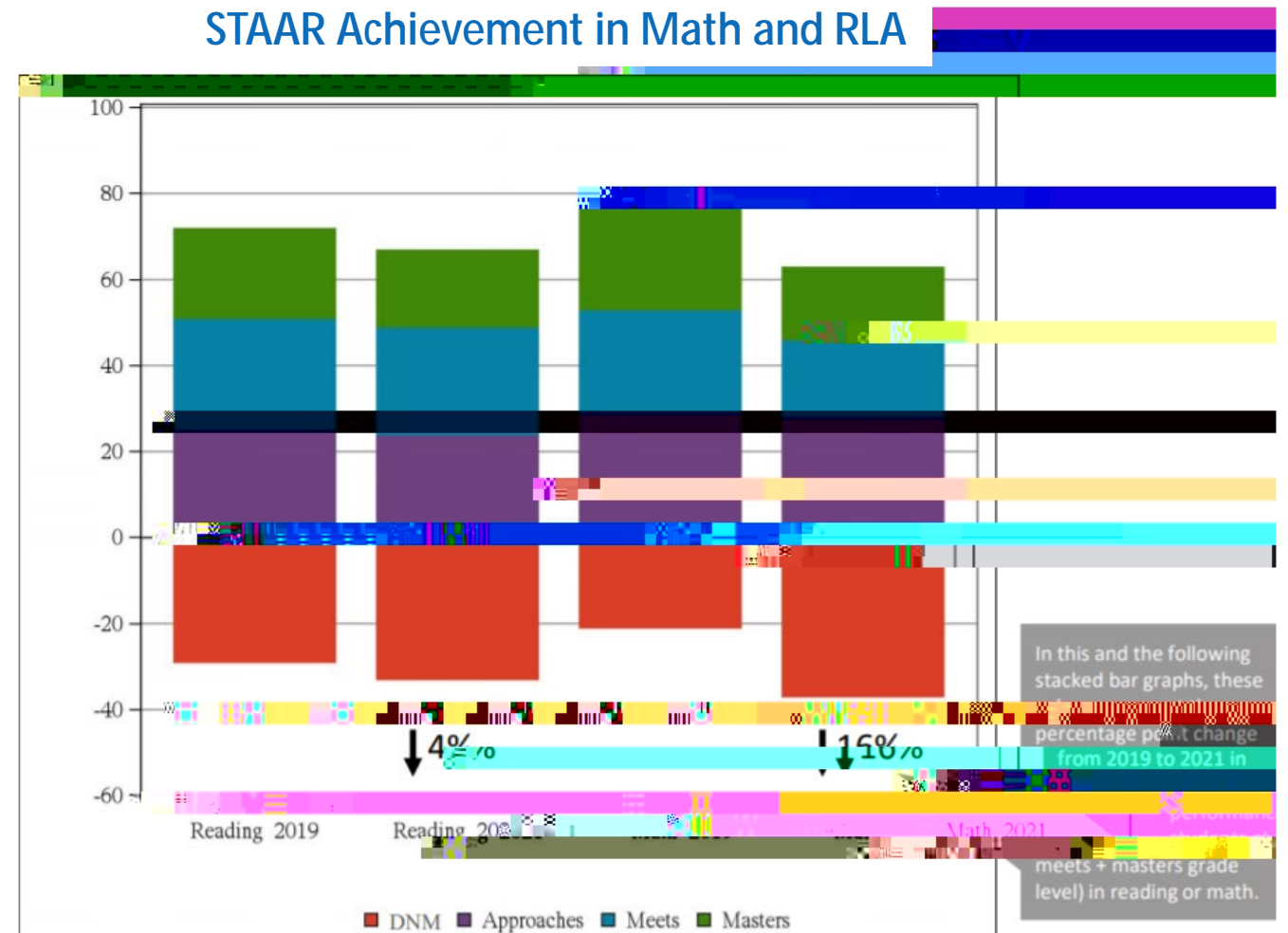
A photograph of a teacher and three young students in a library. The teacher, a woman with glasses and a white shirt, is leaning over a table, looking at a book. The students, two boys and one girl, are also looking at the book. The background shows bookshelves filled with books and colorful posters on the wall.

# Decision 7: School Day/Calendar Redesign Deep Dive



# COVID Caused Additional Achievement Setbacks for Students

- Substantial drops in student achievement have resulted from COVID
- Math achievement, specifically, has seen dramatic drops in obtaining a satisfactory score (16% drop)



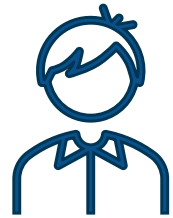
# To Catch Kids Up, Schools Must Make Significant Changes

Expanded learning time is one of the key strategies for COVID response



# Additional Time to Meet Student and Teacher Needs.

We have the opportunity to address numerous causes of student and teacher stress:






- Limited time in day for brain breaks
- Limited time for play
- Limited time for enrichment

# Redesigning the School Year

180

Reimagined School Days

## Change the Schedule

-  Slightly reduce daily academic instruction
-  Add an additional recess
-  Add an additional specials rotation



Each Day

+ 30

Additional School Days

-  Add academic content instructional time via additional days

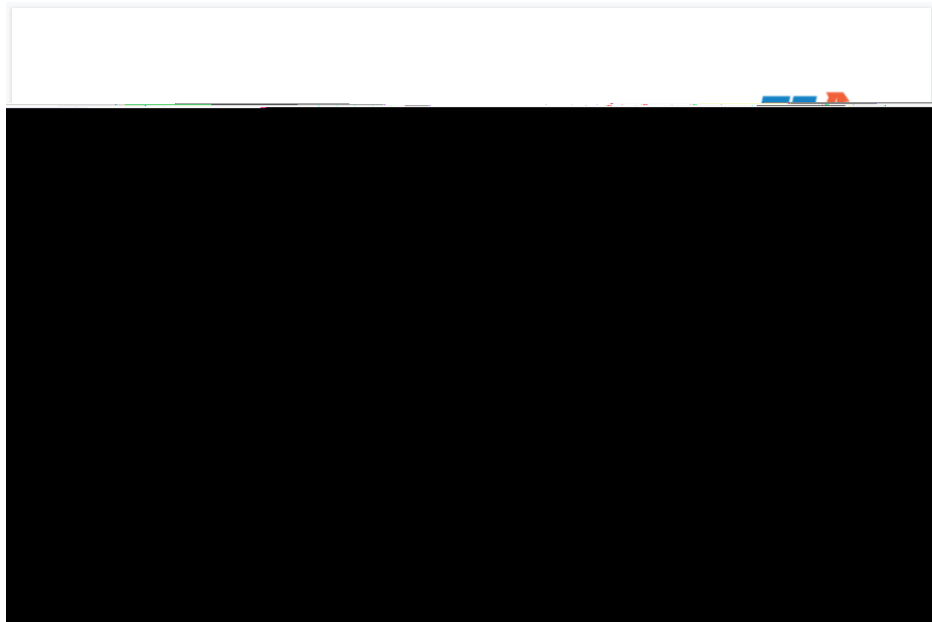


# Solution: School Day / Calendar Redesign

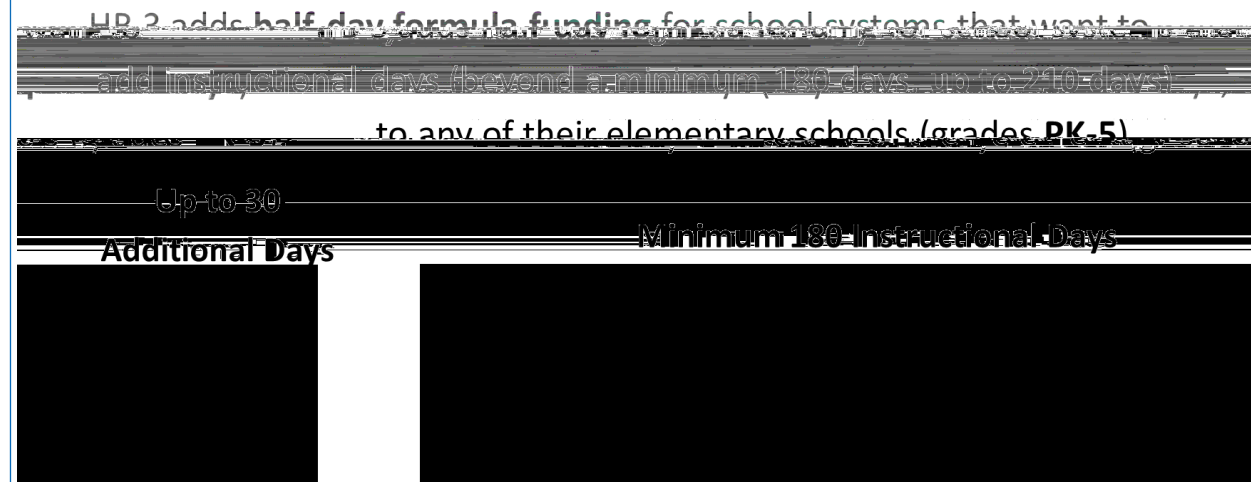


Decision 7 aligns LEAs with a robust planning process to implement a redesign along with ADSY funding.

A Strong Redesign Planning Process...



...with sustainability from Additional Days School Year Funding



Supports will be delivered through the ADSY Planning and Execution Program (PEP) Full Year Redesign Grant



# School Calendar/Redesign: ADSY PEP Cycle 2

The dates below are the key milestones for the ADSY Planning and Execution Program. Time markers are approximate.

Dec    Jan    Feb    Mareb

# TCLAS and ADSY PEP Timing

	Cycle 1 LEAs	Cycle 2 LEAs	Cycle 3 LEAs	Cycle 4 LEAs
What do I need from today?	Welcome back! Focus on next steps for funding 7A, 7B and 7C	Learn about this year's planning process and grants next steps	Learn about next year's planning process and grants next steps	Learn about next year's planning process and grants next steps
When is my planning year (workshop planning)?	When is my planning year (workshop planning)?	When is my planning year (workshop planning)?	When is my planning year (workshop planning)?	When is my planning year (workshop planning)?







# Action Items: Matching Process (Support 7a)



**Step 1: ACTION REQUIRED: Complete Needs Analysis by Tuesday, September 28<sup>th</sup>**

Following today's webinar the ADSY PEP team will send you a link to the Needs Analysis. Please download a copy, complete it for your LEA, and send it back to the ADSY inbox at [adsy@tea.Texas.gov](mailto:adsy@tea.Texas.gov) \*.

**Step 2: ACTION REQUIRED: Connect with Recommended DIP by Wednesday, October 6<sup>th</sup>**

On Friday, October 1<sup>st</sup>, TEA will send each LEA their recommended DIP based on the Needs Analysis and partner capacity. DIPs will reach out to the LEAs point of contact.

**Step 3: ACTION REQUIRED: Confirm Intent to Contract by Friday, October 15<sup>th</sup>**

Confirm intent to contract with your specific DIP.



\*Deadlines for Cycle 2 Only



# Action Items: ADSY Project Manager and Steering Committee (Support 7b)



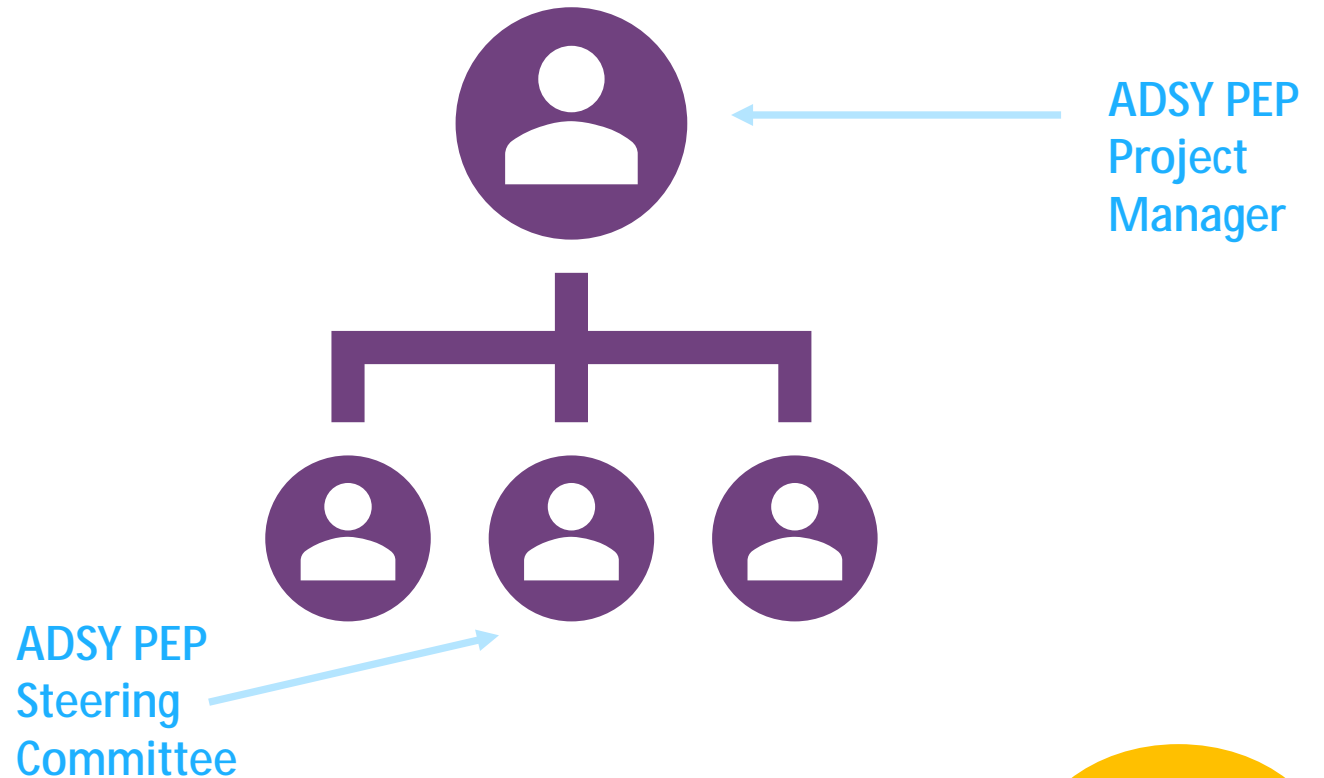
**Step 4: Designate/hire project manager by Monday, November 1**

PM will oversee your ADSY PEP program (if different than your existing Decision 7 point of contact)

- f Support 7A provides base funding of \$125k for the planning year and each additional eligible year*
- f One in-person workshop is expected. Personnel funds can be used for travel for this workshop.*

**Step 5: Designate a steering committee of district leaders by Monday, November 1**

Steering Committee will oversee ADSY planning and implementation



\*Deadlines for Cycle 2 Only



# 7B Double Click: ADSY PEP Steering Committee



As an assurance, grantees commit to forming a cross-departmental Steering Committee, including a representative from the Finance team, to guide ADSY planning.

Potential staff considerations for steering committees:

- $\frac{3}{4}$  CFO / LEA finance lead (required)
- $\frac{3}{4}$  Teachers
- $\frac{3}{4}$  Curriculum Specialist
- $\frac{3}{4}$  Enrichment Partner Coordinator
- $\frac{3}{4}$  Campus Principal
- $\frac{3}{4}$  Operations Team



# Action Item: Operational funding to get to 180 instructional days (Support 7c)



7c funding is distributed in general revenue do6 -11.936.6 (d).7 (o6 -11.936.6 (d).7 (o6 -11.936.6 (d).7 (o6 - -29.61-115pu)-0.s

## Step 6: Complete eGrants application by Friday, October 29\*

- TCLAS helps fund LEAs to get to a 180-day calendar
- Total number of students at participating campuses will be multiplied by 5 days of ADA funding (\$52/student each day)



# of students enrolled at campus x \$52 ADA per day x 5 days

# Decision 7 Assurances Recap

**Grantee Design**

- Grantees will meet all ADSY eligibility requirements for participating campuses, including:
  - Serve at least one grade level within grades PreK-5
  - Campus academic calendar(s) will have at least 180 instructional days, not including staff development waivers
  - Campus academic calendar(s) will have at least 7% of days designated as ADSY days
  - Host ADSY days on separate days from regular instructional calendar days
- Grantees will meet ADSY Planning and Execution Program implementation requirements for participating campuses, including:
  - Create a comprehensive Strategic Plan utilizing the plan, do, check, act templates provided in the grant program
  - Design a cohesive 230-day program
  - Update daily master schedule to increase planning time for teachers and enrichment time for students
  - Contract with an approved ADSY Design & Implementation vendor
  - Participate in all learning community sessions during the 2021-2022 school year (up to one day per month)
  - Participate in three annual reflection processes following the planning year to continuously improve summer programs based on existing data
- Grantees commit to forming a cross-departmental Steering Committee, including a representative from the Finance team, to guide full year redesign planning
- Grantees commit to gain insight to their selected program. Should the grantee determine that the program is not a high-quality program, the grantee will not receive additional execution funding.
- Operations funding covered by the grant is not eligible for operations funds
- Grantees agree to commit to conduct an ADSY program interim assessment and share the results with the state to improve program effectiveness
- Grantees commit to utilizing high quality instructional materials during summer programming. TEA defines high quality instructional materials as those that: 1) are aligned to research-based instructional strategies in the state curriculum; 2) are supported by evidence-based research; 3) are aligned to research-based instructional strategies in the state curriculum; and 4) are aligned to research-based instructional strategies in the state curriculum.

To meet this definition for participating campuses, LEAs shall use Math and English materials listed on 1) Texas Home Learning; 2) Texas Resource Review (rated 80% or higher); 3) EdReports (rated Green and then aligned to the TEKS); or 4) materials evaluated by the LEA in partnership with their Technical Assistance provider using established Texas Resource Review rubrics and rated 80% or higher.

The Texas Covid Learning Acceleration Support (TCLAS Program) 63

*\*See page 63 of the TCLAS Guidance*



# Decision 7/Full Year Redesign Partners

Grantmaker	Advisor	Learning Community Facilitator	Technical Assistance Providers
 The logo for the Texas Education Agency (TEA), featuring the letters 'TEA' in a stylized, colorful font above the text 'Texas Education Agency - Texas Education Agency'.		 The logo for the Education Research Service (ERS), featuring the letters 'ERS' in a bold, blue font above an open book icon.	 The logo for Westat, featuring a colorful, abstract graphic of a grid or map above the word 'Westat' in a blue font.



# Next Steps for TCLAS Decision 7 Supports

## Support 7A (Technical Assistance):

- ™ Step 1) Complete the TA Needs Analysis by Tuesday, September 28\*. You will receive a link following this orientation and send the completed version to [adsy@tea.texas.gov](mailto:adsy@tea.texas.gov).
- ™ Step 2) Connect with Recommended DIP by Wednesday, October 6\*
- ™ Step 3) Notify your selected DIP of intent to contract by Friday, October 15\*

## Support 7B (Personnel):

- ™ Step 4) Hire or designate an ADSY PEP project manager by Monday, November 1\* if different from your existing Decision 8 point of contact
- ™ Step 5) Designate a cross-departmental ADSY PEP steering committee by Monday, November 1\*

## Support 7C (Operations Funds):

- ™ Step 6) Submit eGrants application by Friday, October 29 (ALL CYCLES COMPLETE THIS STEP)

\*Steps 1-5  
for Cycle 2  
Only









## Closing and Next Steps

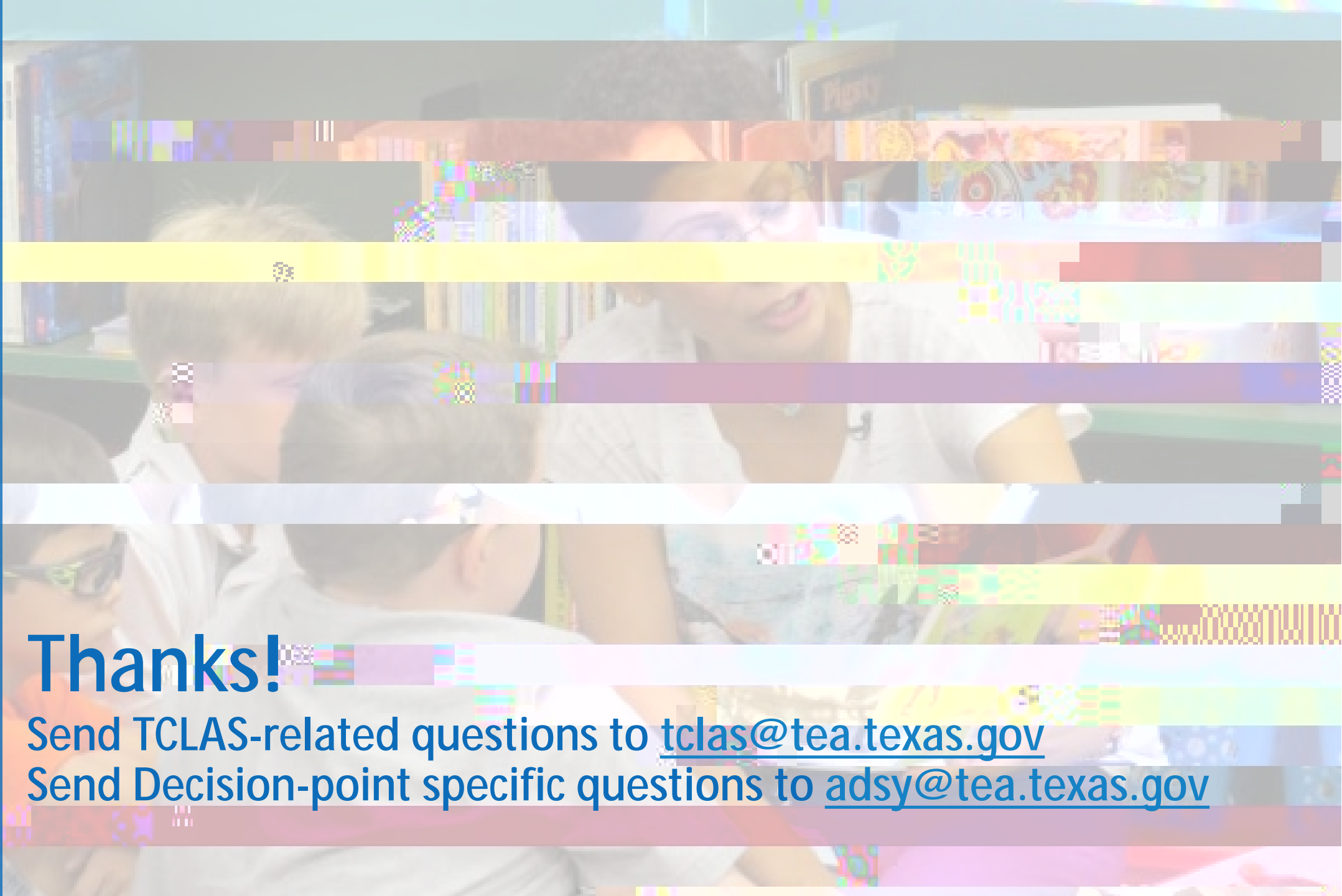
# This support is a heavy lift intended to have a large impact

This support is designed to have a significant and lasting impact on learning acceleration for your students and requires a significant amount of time and effort from you and your staff.

If, after today's webinar, you do not believe that your LEA can fully commit to all requirements and assurances of this TCLAS support, please send an immediately to [tclas@tea.texas.gov](mailto:tclas@tea.texas.gov).







# Thanks!

Send TCLAS-related questions to [tclas@tea.texas.gov](mailto:tclas@tea.texas.gov)

Send Decision-point specific questions to [adsy@tea.texas.gov](mailto:adsy@tea.texas.gov)