

The background of the slide is a photograph of a teacher and three young students in a classroom. The teacher, a woman with glasses, is leaning over a table, looking at a book or document. The students are also looking at the same material. The classroom is filled with bookshelves and educational posters on the wall.

**Decision 2A & 2C: HQIM Core
Approved Products (State Approved
Vendor List)
TCLAS Initiative Kickoff Webinar**

Welcome and Congratulations on your Award!



Melissa Lautenschlager
Director, Instructional Materials and
Implementation

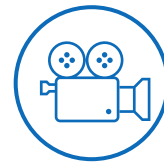


Agenda and FYIs for Today's Webinar

Agenda

1. Welcome and Introductions
2. TCLAS Award Next Steps
3. Decision Specific Deep Dive
4. Recap Next Steps

FYIs



Please ask questions and drop them in the **Question and Answer** box in Zoom



This recording and these slides will be posted on tea.texas.gov/tclas shortly after this webinar concludes

Onboarding Webinar Schedule

9/13	9/14	9/15	9/16	9/17
9am-10am: TCLAS Launch	4pm-5pm: Decision 10	<ul style="list-style-type: none"> 9am-10am: Decision 1 10:30am-11:30am: Decision 3B 2:30pm-3:30pm: Print Access (Decisions 2B & 3C) 4-5pm: Digital Access (Decisions 2A, 3A, 3D, & 6) 	<ul style="list-style-type: none"> 9am-10am: Decision 9A 10:30am-11:30am: Decision 9B 1pm-2pm: Decision 9C 2:30pm – 3:30pm: Decision 2A & 2C (CRIMSI) 4pm-5pm: Decision 2A & 2C (SAVL) 	9am-10am: eGrants
9/20	9/21	9/22	9/23	9/24
9am-10am: Decision 3E	<ul style="list-style-type: none"> 9am-10am: Decision 8 1pm-2pm: Decision 5 2:30pm-3:30pm: Decision 4 4pm-5pm: Decision 7 			9am-10am: eGrants office hours
				10/1, 10/15, and 10/29
				9am-10am: eGrants office hours



Onboarding Webinar Schedule

9/13	9/14	9/15	9/16	9/17
9am-10am: TCLAS Award Kick-Off Webinar	4pm-5pm: Decision 10	<ul style="list-style-type: none"> 9am-10am: Decision 1 10:30am-11:30am: Decision 3B 2:30pm-3:30pm: Pr4 (p)2 (m)1 (:)-25 (P)4 (r4 (6)JTJ)/ (P2 (m)1 (:)-A (P2cces)0 Td)1 (:)- 6/JE0 Tc1f We 0 Tw(s)-1 (i) 		



Optional eGrants Application Webinars

Webinar	Date/Time	Short Registration Link
Overview Webinar	Friday, 9/17 9– 10 am CT	bit.ly/TCLAS_eGrants_Overview
Office Hours #1	Friday, 9/24 9– 10 am CT	bit.ly/TCLAS_eGrants_OH1
Office Hours #2	Friday, 10/1 9– 10 am CT	bit.ly/TCLAS_eGrants_OH2
Office Hours #3	Friday, 10/15 9– 10 am CT	bit.ly/TCLAS_eGrants_OH3
Office Hours #4	Friday, 10/29 9– 10 am CT	bit.ly/TCLAS_eGrants_OH4

Audience: District staff submitting eGrants application



A background image showing a teacher and two young students in a classroom. The teacher, a woman with glasses, is leaning over a desk, looking at a book or document. Two young boys are sitting at the desk, looking at the same document. The classroom has bookshelves in the background.

Decision 2A: HQIM Core Approved Products Implementation and PL (State Approved Vendor List) Deep Dive

Decision 2a and Decision 2c Overview

The following is an overview of Decision 2 supports included in TCLAS:

2a: LEA Implementation Support and Professional Learning

Focus of Today's webinar

2b: Print Materials

All LEAs participating in 2a will have access to print materials to support implementation.

Specifics on how to access print materials was included in separate webinar that will be posted online.

2c: RLA and Math K-5 Literacy Coaches

Focus of Today's webinar

Decision 2a and Decision 2c Overview

2a: LEA Implementation
Support and Professional
Learning

2b: Print Materials

2c: RLA and Math K-5
Literacy Coaches

HQIM Theory of Action

Adoption
of HQIM

2A. Award Type



2A. Award Calculation

1

TEA Direct Supports (e.g., CRIMSI)

Direct Grants to LEAs





.....
e-'
n



LEA Assurances Aligned to Vendor Expectations

Commitment

Critical Success
Criteria

Planning and
Implementation

Data
Requirements

Math Zones
Designation

- LEA appoints **initiative lead**
- LEA leadership creates **content specific task force** to support planning and implementation
- LEA leadership commits to **completing a required set of planning tasks** and deliverables
- LEA appoints **school level lead** to serve as the primary point of contact
- School leaders commit to completing, and helping ensure teachers and coaches complete, a required set of **planning and professional learning tasks** and deliverables.
- LEA proposed school leader(s), coaches and teachers have **agreed to participate**

LEA Assurances Aligned to Vendor Expectations

Commitment

Critical Success
Criteria

Planning and
Implementation

Data
Requirements

Math Zones
Designation

- Participants understand that instructional materials must be piloted and implemented as intended, including:
 - **following the scope and sequence,**
 - **using the curriculum-embedded assessments, and**
 - **meeting the minimum number of instructional minutes;** Note: LEA and campus(es) agree to adapt the daily schedule as needed to support the minimum number of instructional minutes necessary for the pilot product(s).

LEA Assurances Aligned to Vendor Expectations

Commitment

Critical Success
Criteria

Planning and
Implementation

Data
Requirements

Math Zones
Designation

- **Planning Support**
 - Attend required **virtual onboarding sessions** prior to launch of HQIM in classrooms
 - Attend **planning sessions** to support and prepare for successful implementation
- **Implementation Support**
 - LEA and school initiative lead attend and **participate in ongoing check-ins** for the duration of implementation (may include individual or group sessions)
 - Attend and participate in **ongoing, virtual professional learning** for the duration of the initiative

LEA Assurances Aligned to Vendor Expectations

Commitment

Critical Success
Criteria

Planning and
Implementation

Data
Requirements

Math Zones
Designation

- LEA leadership commits to completing a required set of planning tasks and deliverables. At the minimum, this will include:
 - HQIM Strategic Plan
 - Student-level progress monitoring data, including unit assessment results
 - Periodic feedback surveys
 - An annual performance review of the selected TEA vendor

LEA Assurances Aligned to Vendor Expectations

Commitment

Critical Success
Criteria

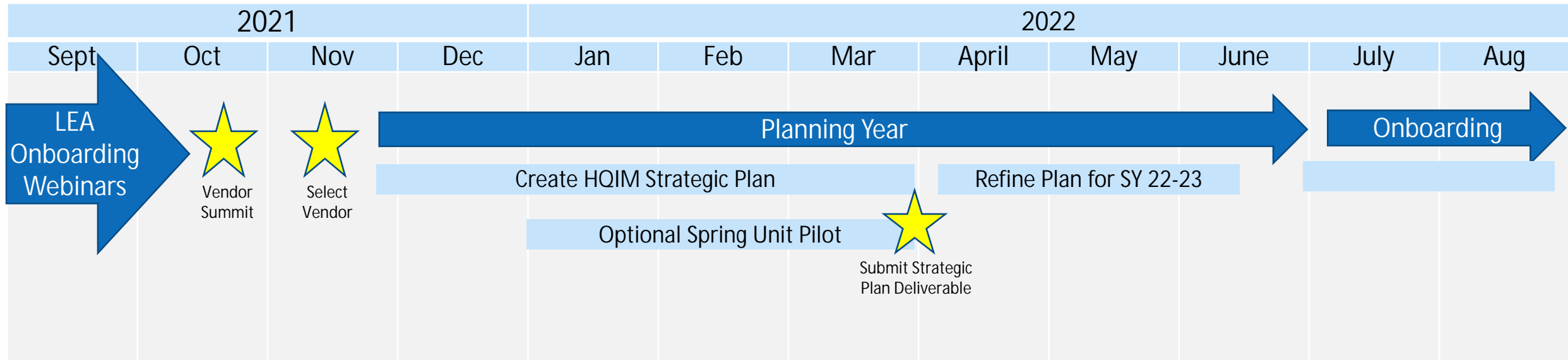
Planning and
Implementation

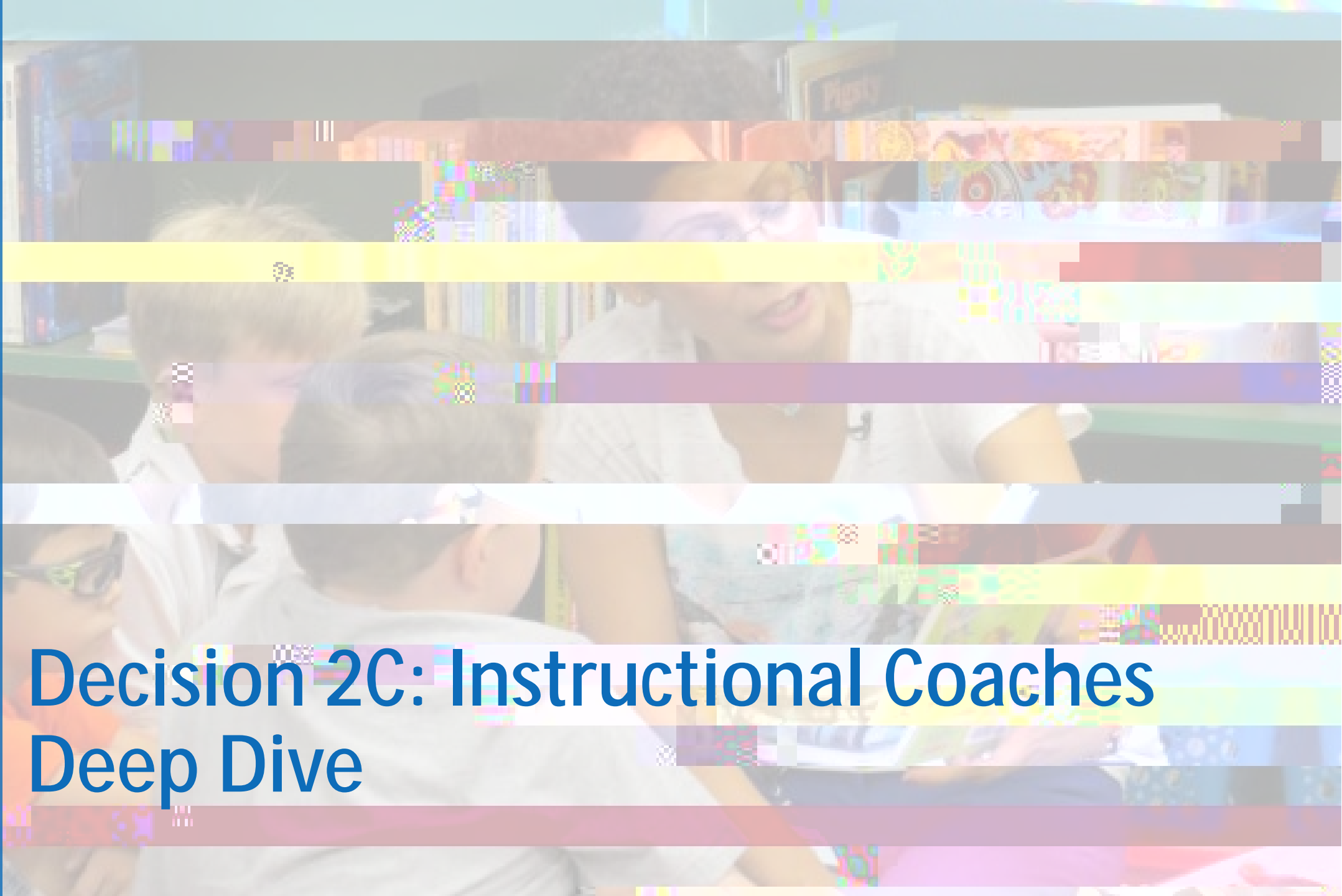
Data
Requirements

Math Zones
Designation

- LEA must contract with an approved vendor for 2A: District Implementation Support
- The LEA must implement a TEA approved blended learning supplement for Eureka Math TEKS Edition as included in the TCLAS state approved vendor list. The two approved vendors include ST Math and Zearn.
- The LEA must submit the Blended Learning Strategic Plan for evaluation in the spring
- The LEA must submit student progress and usage data from the approved blended learning supplement to TEA for program continuous improvement

LEA Sample Decision 2A Timeline



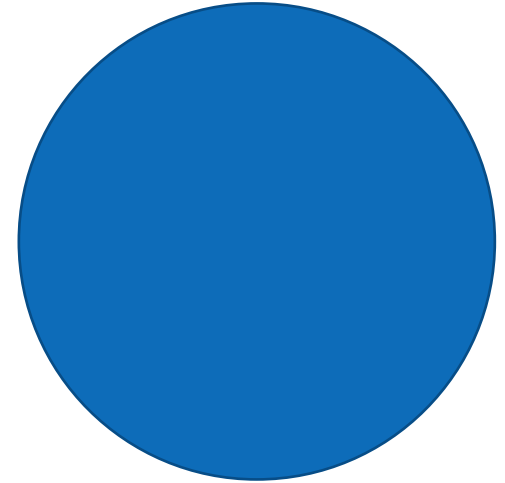


Decision 2C: Instructional Coaches

Deep Dive

Recap: Funding for Literacy and Math Coaches

Through this decision, LEAs may access funds to hire math and literacy coaches at elementary schools using



Reminder: 2c Assurances

Decision 2c Assurances

- Coaches are required to **complete professional development requirements** to receive continued funding
- Coach primary responsibility is to provide **job-embedded coaching and feedback supports to teachers** implementing approved core products



Reminder: 2c Assurances

LEAs will complete the following steps to meet assurances

1. Hire/identify coaches that will be supported with TCLAS funds

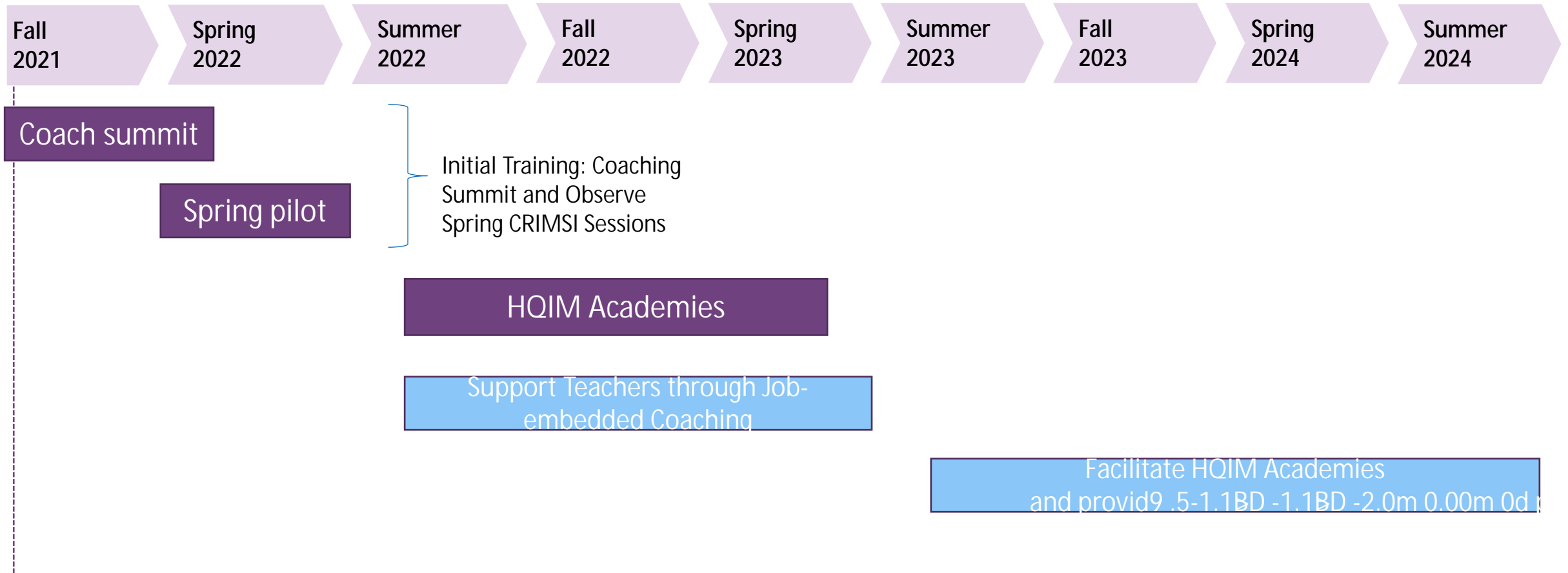
Note: LEAs must identify a total number of FTEs aligned to the grant awarded (e.g., if awarded for 2 FTEs, LEAs must meet requirements for 2 FTEs)

If awarded a part time FTE, that FTE will still be required to complete training requirements

2. Provide TEA with list of coach participants in 2c program
- 3.



Training Timeline: Instructional Coaches





Closing and Next Steps

This support is a heavy lift intended to have a large impact

This support is designed to have a significant and lasting impact on learning acceleration for your students and requires a significant amount of time and effort from you and your staff.

If, after today's webinar, you do not believe that your LEA can fully commit to all requirements and assurances of this TCLAS support, please send an immediately to tclas@tea.texas.gov.





Thanks!

Send TCLAS-related questions to tclas@tea.texas.gov
Send Decision-point specific questions to
melissa.lautenschlager@tea.texas.gov