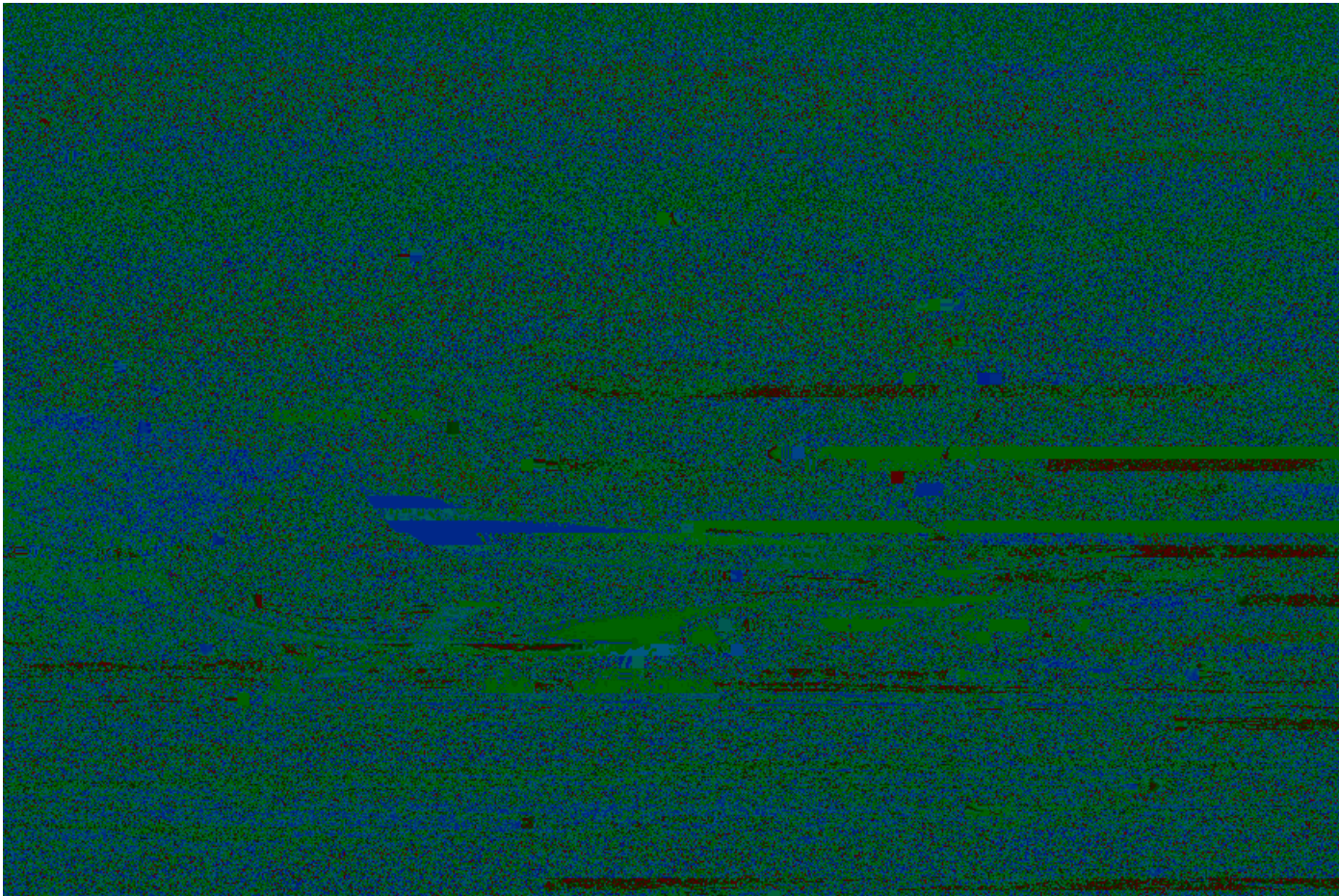


State of Texas
Assessments of

E_  L_ -

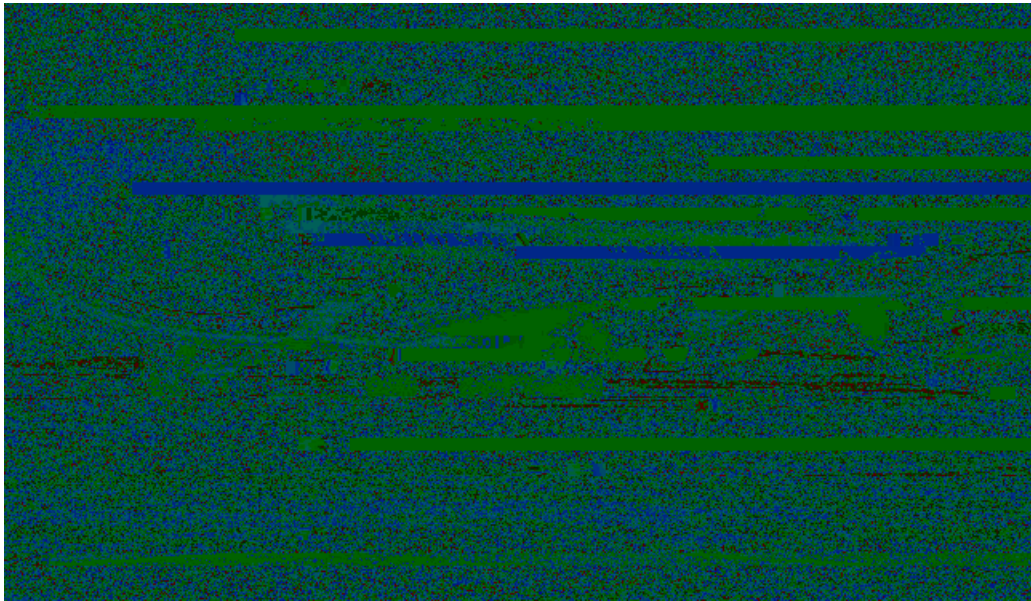
1

Air Force One, a a, c, aff. b U, Sa, A,
F, c, is an important plane.

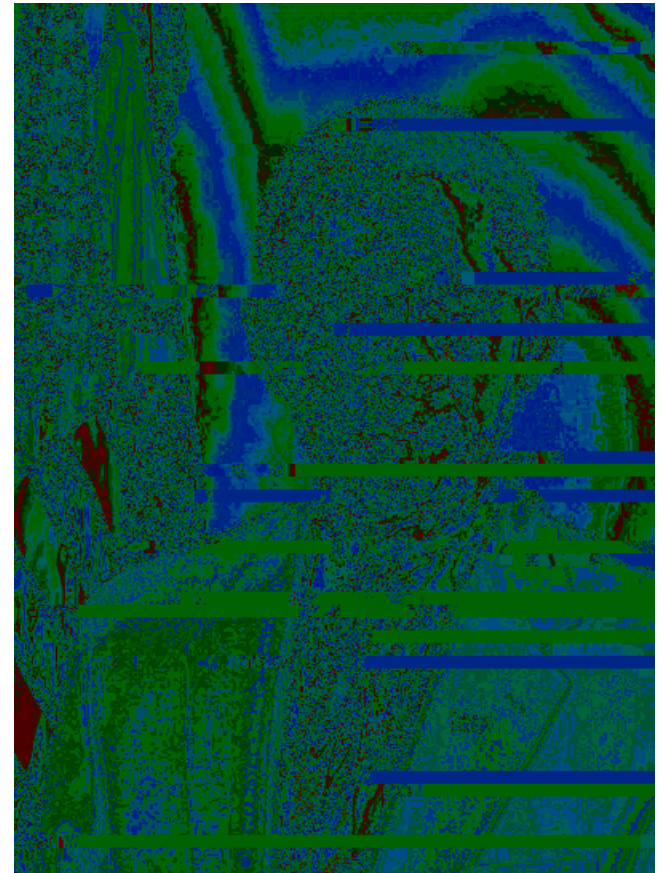


Air Force One, a a, c a f . b . U . S . a .
A, F, c., is an important plane. This plane provides air transportation for the president of the United States.

2b



14.4.1



14.4.1

The Solar Schoolhouse Program, an organization that teaches how the sun can be used to produce electricity, invites students to participate in the Solar Olympics. On a sunny day in California, students cheer as the small model cars they have made speed along a track. Each model car has a different design, but people who look closely will see

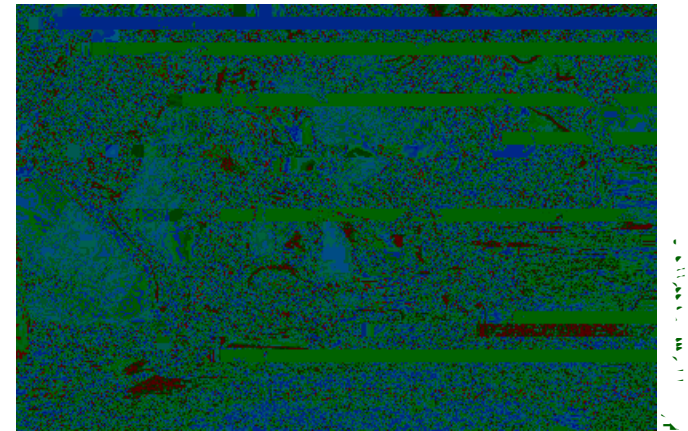
The Solar Schoolhouse Program, an organization that teaches how the sun can be used to produce electricity, invites students to participate in the Solar Olympics.

On a sunny day in California, students cheer as the small model cars they have made speed along a track.

Each model car has a different design, but people who look closely will see something unusual about the race cars.

T, S a Sc, P, a, a
 a a a, ac,
 ca b, c,
 c, c,
 a c a, S a O, c.

On a sunny day in California, students cheer as the small model cars they have made speed along a track. Each model car has a different design, but people who look closely will see something unusual about the race cars. Each race car has a solar panel and is powered by the sun.



4b

The Solar Schoolhouse Program gives each student who participates a solar-powered car.

The Solar Schoolhouse Program provides heat that can be used to produce electricity for race cars.

The Solar Schoolhouse Program provides opportunities to learn about solar energy.

H / / / . D a G . | , S , a c ,

1. Open your Web browser





2. Type / / / . | , . c

3. Press "Enter"

4. Type the topic

5. Click "Google Search"

1.  

4.  **Google**

to have a better chance of finding the topic you are researching

to find other topics related to the topic you entered in the search box

to go to the page with the most information about your topic

H D G

1. 


2. 

3. 

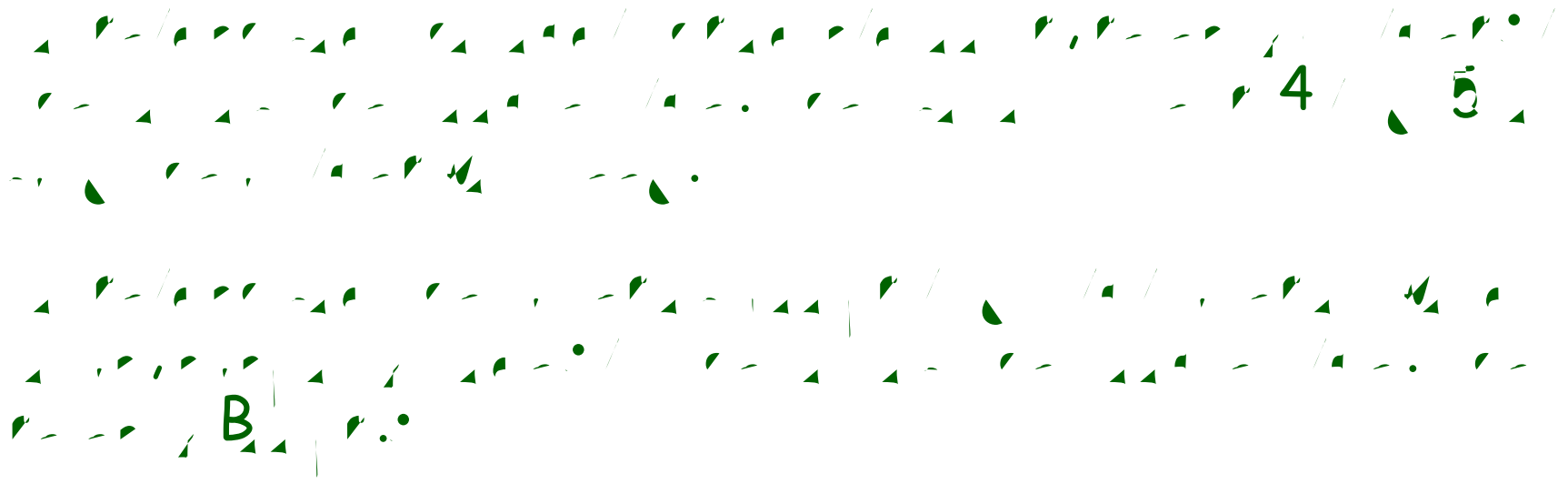
4. 

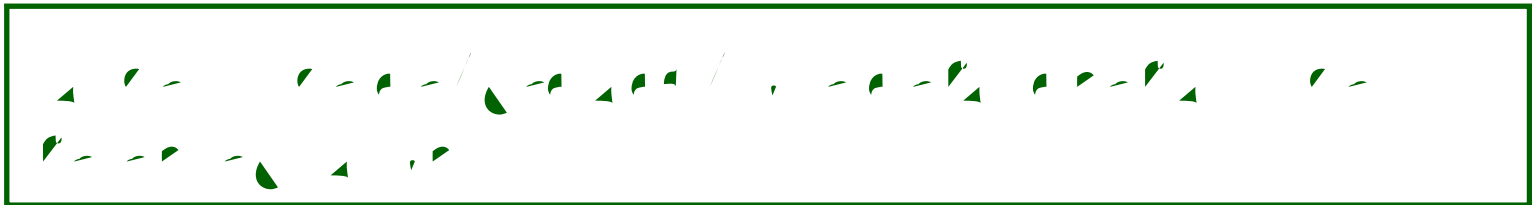
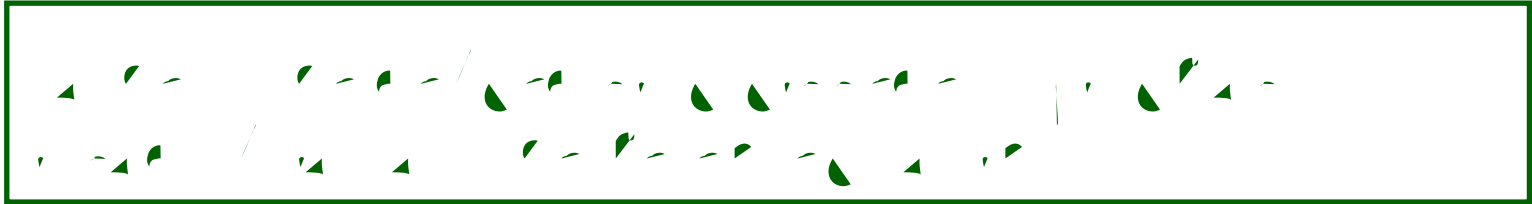
5. *C* 

6. 

7. 

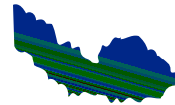
8a





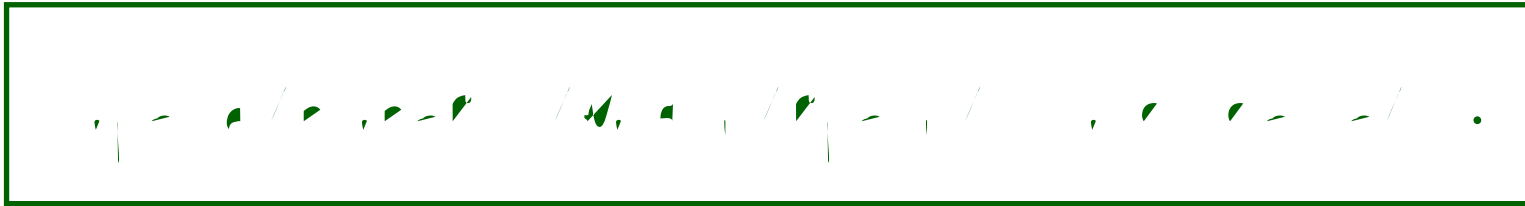
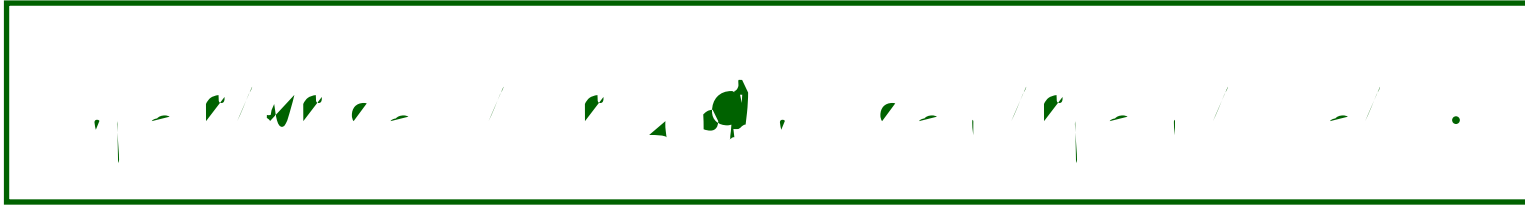


Mike sat in front of his
locker. Taped inside his locker



11a

11b



Handwritten musical score for guitar and voice. The score is written on four staves. The first staff is for guitar, marked with a 'C' and a 'J'. The second staff is for voice, marked with a 'J'. The third and fourth staves are for guitar. The music is written in a style that suggests a specific rhythm, possibly a 3/4 or 4/4 time signature. The notation includes various rhythmic values, accidentals, and articulation marks. The handwriting is in black ink on a white background.

Handwritten musical score for three staves. The top staff is in treble clef with a key signature of one flat and a common time signature. The middle and bottom staves are in bass clef with a common time signature. The music consists of rhythmic patterns of eighth and sixteenth notes with stems pointing up and down.

Staff 1 (Treble Clef):

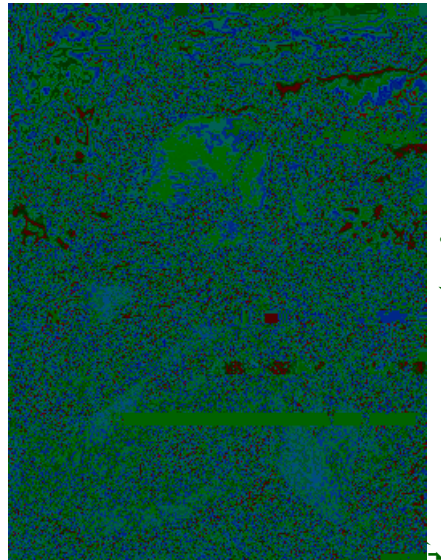
Staff 2 (Bass Clef):

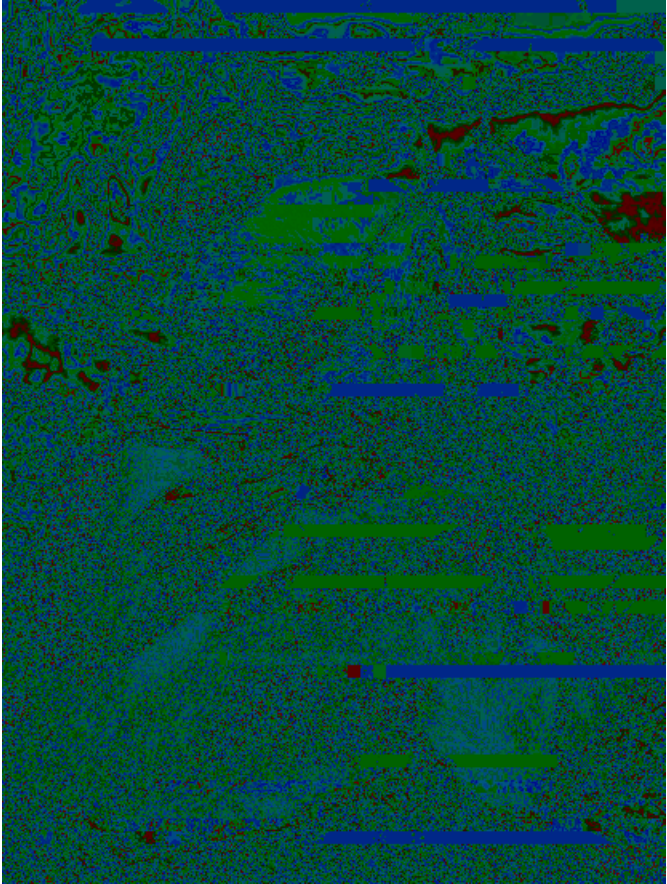
Staff 3 (Bass Clef):



Coach Smith talks to Mike about his own physical challenges —

The giant panda is a typical bear. Its black-and-white coloring gives the panda a special look.





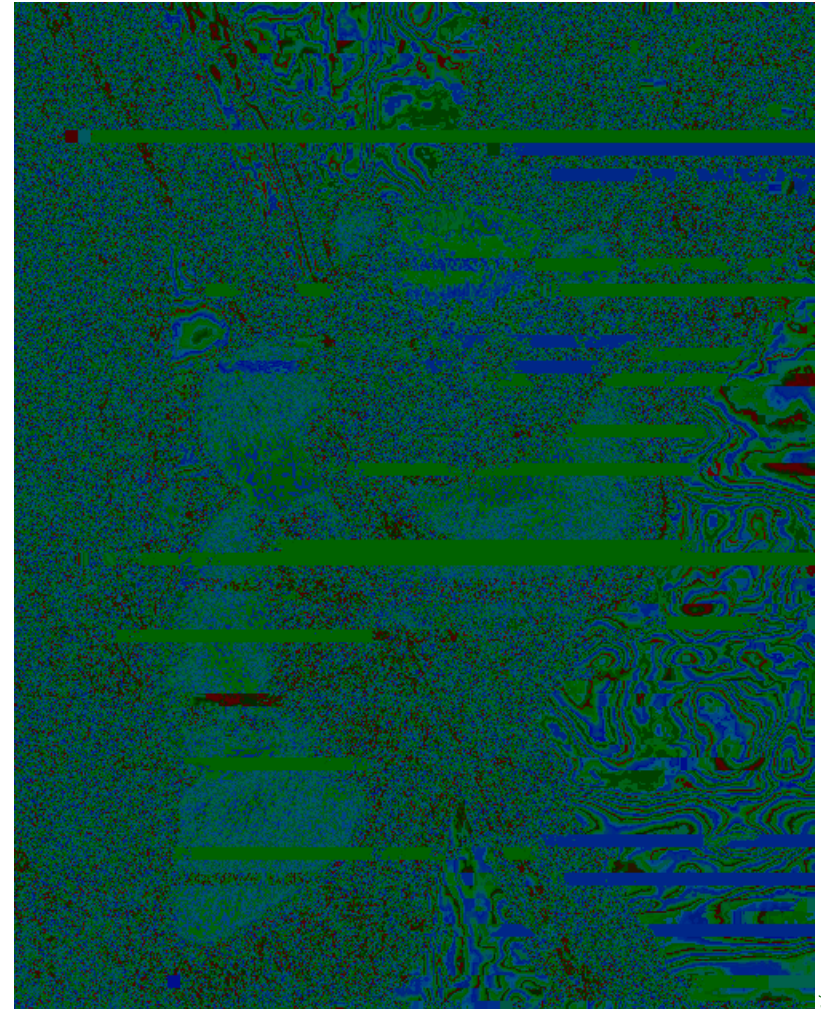
Pandas live in bamboo forests in China. Much of the land where pandas live has been cleared for farming.

However, much of the land where pandas live has been cleared for farming.

The land has been cleared for farming.

Mother panda bears give birth to one or two babies every two years. T bab

a a
c a b . I ca
75 b
b a .



I . . . a the baby panda weighs three or four ounces at birth, and it can weigh 75 pounds by its first birthday.

S . . . a the baby panda weighs three or four ounces at birth, and it can weigh 75 pounds by its first birthday.

A the baby panda weighs three or four ounces at birth, it can weigh 75 pounds by its first birthday.

16a

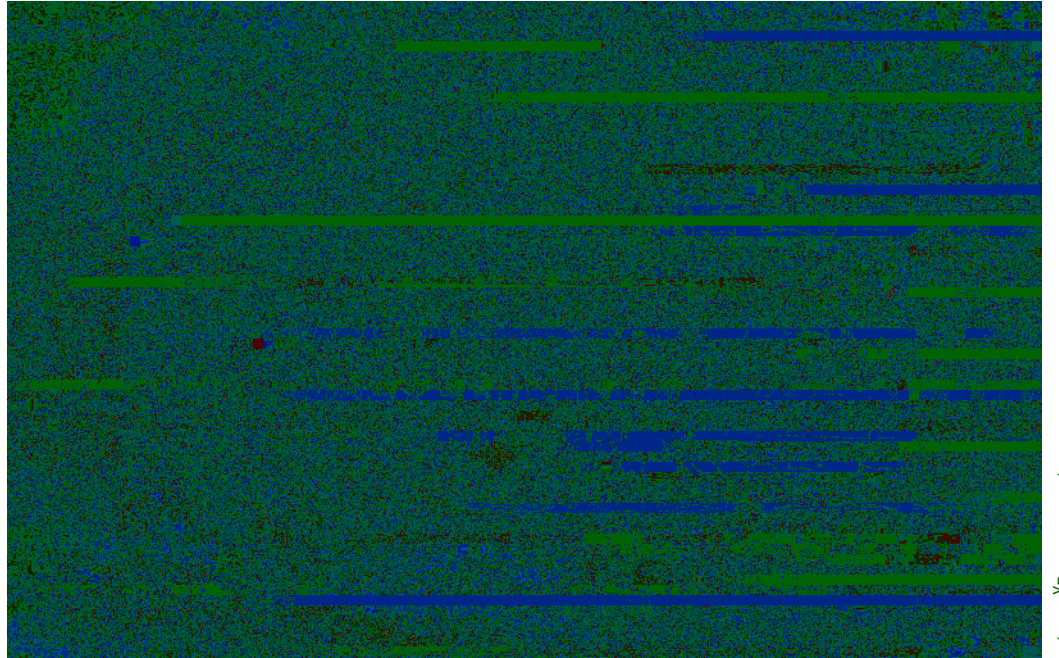
The newborn panda depends on its mother for several weeks after it is

I ac, some pandas have eaten 84 pounds of food by the end of the day.

A a, some pandas have eaten 84 pounds of food by the end of the day.

H h

march 6, 1836



The Battle of the Alamo ended on Ma c 6, 1836.

In 1836 the Alamo
was in the town of
Sa A _____, TX.

In 1836 the Alamo
was in the town of
Sa a _____, T/.

Several months before the Battle of the Alamo, the Texans had pushed the Mexican army out of Texas. About 100 Texas soldiers were stationed at the Alamo. On February 23, about 1,500 soldiers from Mexico led by General Santa Anna marched into San Antonio.

William B. Travis, a co-commander of the troops at the Alamo, knew his soldiers could not survive an attack by General Santa Anna's large army. On Feb. 24, 1836, Travis wrote letters from the Alamo begging for more men and supplies. Fewer than 100 more Texas soldiers arrived.

general Santa anna

William B. Travis

On feb. 24, 1836

The Battle of the Alamo lasted 13 days. Mexican troops led by General Santa Anna attacked the Alamo in San Antonio, Texas. All the Texans at the Alamo were killed. This inspired many settlers from the United States to join the Texas army. The Texas army defeated the Mexican army at the Battle of San Jacinto on April 21, 1836. This ended the war between Texas and Mexico.

The battle of the alamo lasted 13 days.

This inspired many settlers from the United States to join the Texas army.

The Texas army defeated the Mexican army at the Battle of San Jacinto on april 21, 1836.

STAAR ALTERNATE 2
English II
April 2016