



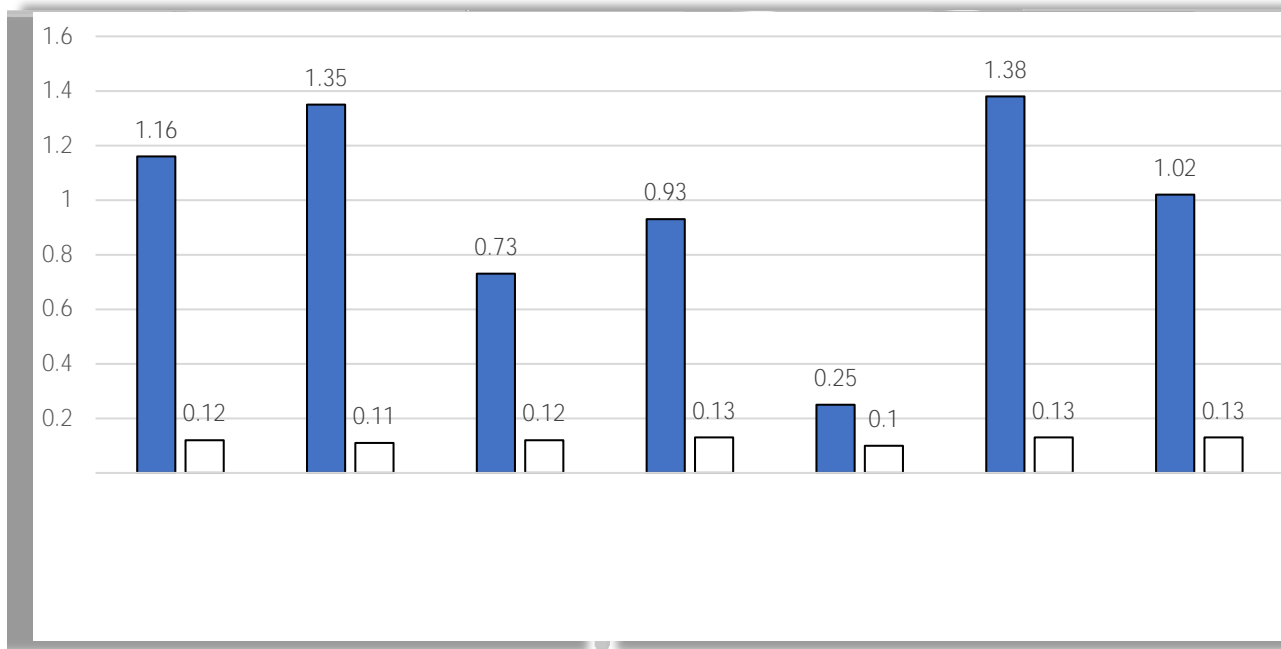




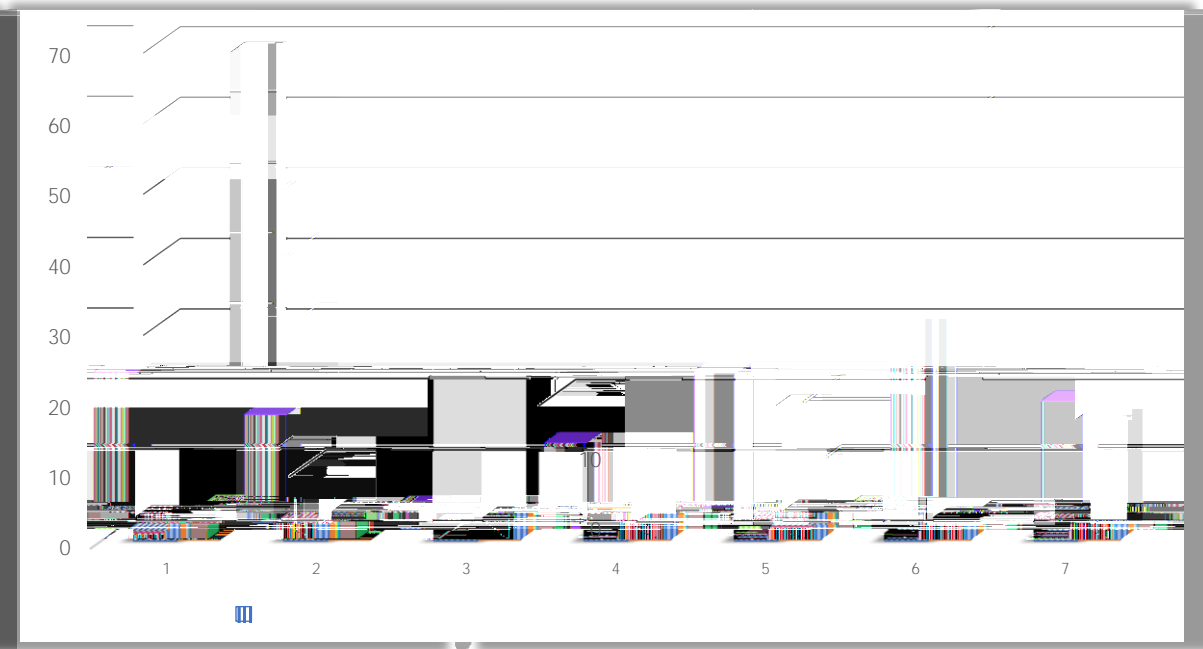
# Academic Growth

Sierra School at Wylie  
*Early Behavioral Intervention Model*

### Student Growth in Reading (SY21-22)



### Student Growth in Math (SY21-22)



Sierra School at Wylie ISD vs National Average  
(18 weeks)



# Partnering to Support Students In Texas

## REGION 10

- 🌱 Wylie ISD | Early Behavioral Intervention-21
- 🌱 R10 @ Wylie | Intensive Behavioral Needs-6)(4
- 🌱 R10 @ Plano | Intensive Behavioral Needs-8)(
- 🌱 R10 @ Plano | Intensive Behavioral Needs-1)(2)
- 🌱 R10 @ Plano | Functional Communication Support-1)(2)

## REGION 7

- 🌱 West Sabine ISD | Intensive Behavioral Needs-1)(K
- \*Partnership with SRSN/R15; TEA Engagement, Support & Feedback

## REGION 4

- 🌱 Angleton ISD | Intensive Behavioral Needs-9)(6

# Partnering to Support Students In Texas



